

April 27, 2004, 10.00 to 12.00 a.m.



Press Release

Financial Year 2003

MAHLE Group

Worldwide Automobile Production 2002/2003

(Number in 1000s)



| | 2002 | | 2003 | |
|------------------------|---------------------------|---------------------|---------------------------|---------------------|
| | Pass. cars & light comls. | Commercial vehicles | Pass. cars & light comls. | Commercial vehicles |
| America | 18,260 | 430 | 17,827 | 426 |
| - NAFTA | 16,365 | 368 | 15,937 | 357 |
| - South America | 1,895 | 62 | 1,890 | 69 |
| Asia/Pacific | 18,503 | 694 | 19,511 | 728 |
| - Japan | 10,021 | 170 | 9,877 | 196 |
| - China | 2,795 | 407 | 3,629 | 397 |
| Europe | 19,386 | 447 | 19,427 | 449 |
| - Germany | 5,335 | 124 | 5,299 | 125 |
| Other Countries | 951 | 0 | 1,023 | 0 |

Source: Global Insight Automotive World Car Industry Report (Pass. cars and light comls. (< 6t))

| First consolidation: | since | shares in % |
|-------------------------------|--------------|--------------------|
| MAHLE Izumi/Japan | 01.01.2003 | 100 |
| Tennex Korea/South Korea | 01.01.2003 | 100 |
| ZNF Maschinenfabrik Spandau | 01.01.2003 | 51 |
| MAHLE Ventiltrieb Brandenburg | 01.01.2003 | 100 |

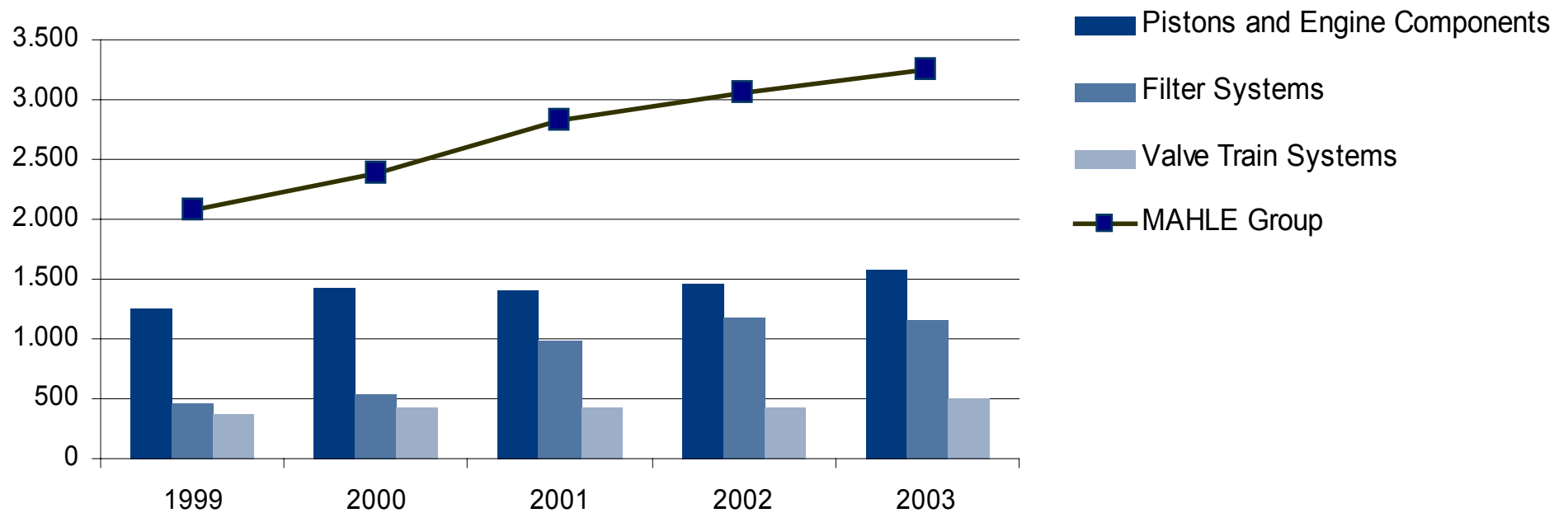
| Number of fully consolidated companies: | 2002 | 2003 |
|--|-------------|-------------|
| Parent Company | 1 | 1 |
| Subsidiaries | | |
| Germany | 13 | 14 |
| Foreign countries | 50 | 51 |

MAHLE Group
 Financial Statements 2003
 Exchange rates



| | 2002 | 2003 | Change in % |
|---------------------------|--------|--------|-------------|
| 1 EUR = USD | | | |
| Exchange rate per Dec. 31 | 1.0487 | 1.2630 | 20.43 |
| Average exchange rate | 0.9449 | 1.1309 | 19.68 |
| 1 EUR = JPY | | | |
| Exchange rate per Dec. 31 | 124.39 | 135.05 | 8.57 |
| Average exchange rate | 118.07 | 130.97 | 10.93 |
| 1 EUR = BRL | | | |
| Exchange rate per Dec. 31 | 3.6972 | 3.6468 | -1.36 |
| Average exchange rate | 2.7889 | 3.4768 | 24.67 |

MAHLE Group Financial Statements 2003 Sales (in Mio. Euro)



MAHLE Group
 Financial Statements 2003
 Sales



| | 2002 Mio. Euro | 2003 Mio. Euro | Change Mio. Euro |
|-------------------------------|-------------------|-------------------|---------------------|
| Pistons and Engine Components | 1,454.4 | 1,577.7 | 123.3 |
| Filter Systems | 1,182.5 | 1,162.3 | -20.2 |
| Valve Train Systems | 427.3 | 500.7 | 73.4 |
| Services | 6.1 | 5.4 | -0.7 |
| MAHLE Group | 3,070.3 | 3,246.1 | 175.8 |

MAHLE Group
Financial Statements 2003
Profit and Loss Statement



| | 2002 | | 2003 | |
|--|----------------|--------------|----------------|--------------|
| | Mio. Euro | % | Mio. Euro | % |
| Sales | 3,070.3 | 98.6 | 3,246.1 | 97.6 |
| Change in inventories/goods on own account | 44.7 | 1.4 | 80.9 | 2.4 |
| Overall performance | 3,115.0 | 100.0 | 3,327.0 | 100.0 |
| Other operating income | 175.3 | 5.6 | 188.0 | 5.7 |
| Cost of materials | -1,266.8 | -40.7 | -1,403.3 | -42.2 |
| Personnel cost | -997.7 | -32.0 | -1,054.0 | -31.7 |
| Depreciation* | -232.1 | -7.5 | -245.3 | -7.4 |
| Other operating expenses | -600.2 | -19.3 | -611.6 | -18.4 |
| | 193.5 | 6.2 | 200.8 | 6.0 |
| Financial results | -18.2 | -0.6 | -20.2 | -0.6 |
| Result from ordinary activity | 175.3 | 5.6 | 180.6 | 5.4 |
| Taxes | -94.2 | -3.0 | -85.4 | -2.6 |
| Net profit | 81.1 | 2.6 | 95.2 | 2.9 |

* Depreciation on tangible and intangible assets

MAHLE Group

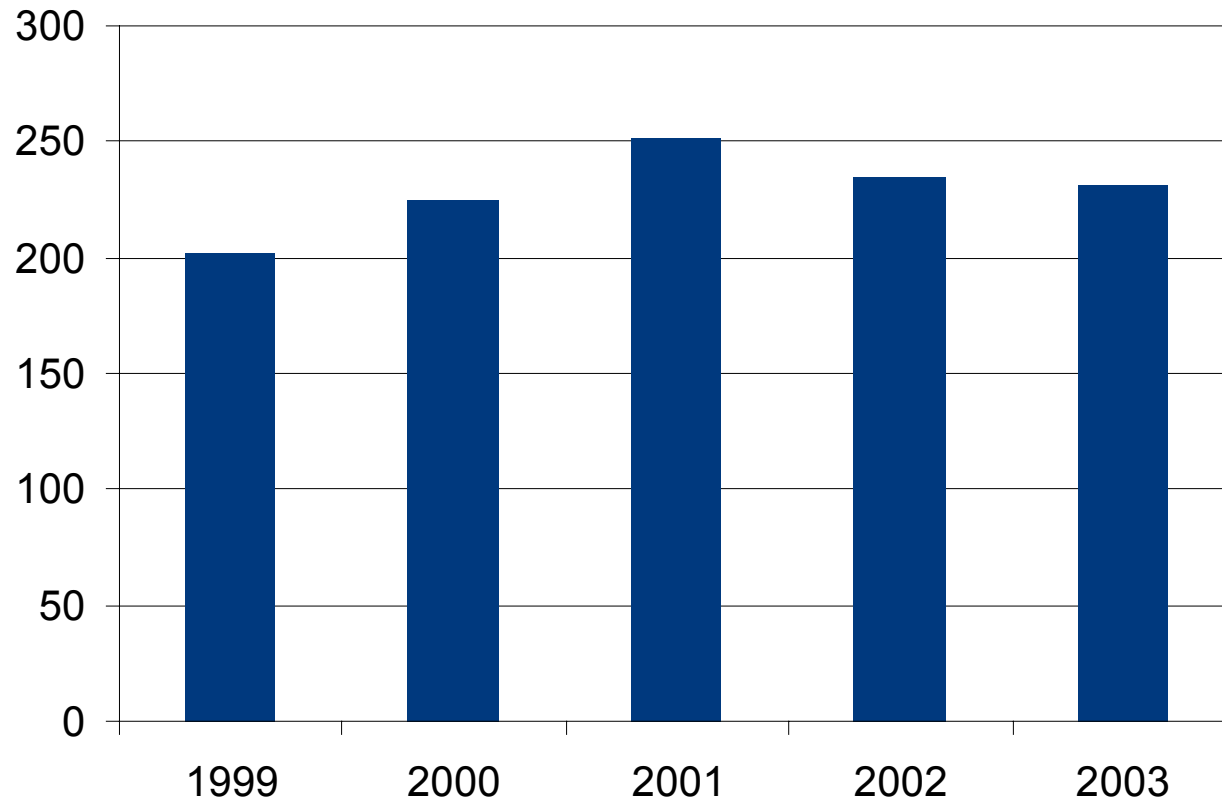
Financial Statements 2003

Balance Sheet

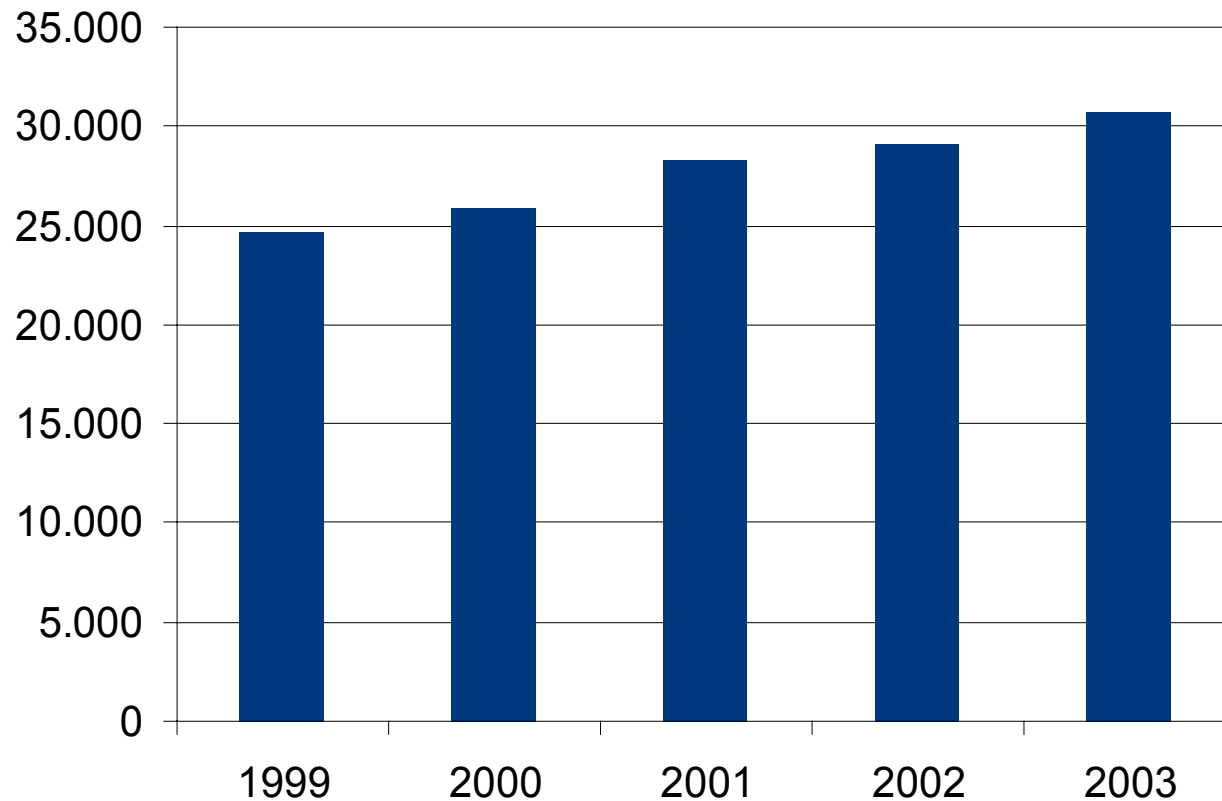


| | 2002 | | 2003 | | | 2002 | | 2003 | |
|----------------------------|----------------|--------------|----------------|--------------|--------------------------------------|----------------|--------------|----------------|--------------|
| | Mio. Euro | % | Mio. Euro | % | | Mio. Euro | % | Mio. Euro | % |
| Assets | | | | | Equity and Liabilities | | | | |
| Intangible assets | 138.7 | 6.2 | 139.1 | 5.9 | Equity | 885.6 | 39.9 | 900.1 | 38.3 |
| Tangible fixed assets | 1,064.3 | 47.9 | 1,027.4 | 43.8 | Special items with an equity portion | 16.2 | 0.7 | 0.0 | 0.0 |
| Financial assets | 26.0 | 1.2 | 36.5 | 1.6 | Pension accruals | 266.2 | 12.0 | 290.1 | 12.4 |
| Inventory | 338.4 | 15.2 | 384.5 | 16.4 | Other accruals | 357.9 | 16.1 | 393.7 | 16.8 |
| Accounts receivables | 474.6 | 21.4 | 486.2 | 20.7 | Liabilities to banks | 350.7 | 15.8 | 381.2 | 16.2 |
| Liquid assets | 91.4 | 4.1 | 174.2 | 7.4 | Other liabilities | 344.9 | 15.5 | 382.8 | 16.3 |
| Other assets | 88.1 | 4.0 | 100.0 | 4.3 | | | | | |
| Balance sheet total | 2,221.5 | 100.0 | 2,347.9 | 100.0 | Balance sheet total | 2,221.5 | 100.0 | 2,347.9 | 100.0 |

MAHLE Group
Financial Statements 2003
Investments



MAHLE Group Financial Statements 2003 Headcount Development



MAHLE Group
 Financial Statements 2003
 Headcount as of Dec. 31, 2003

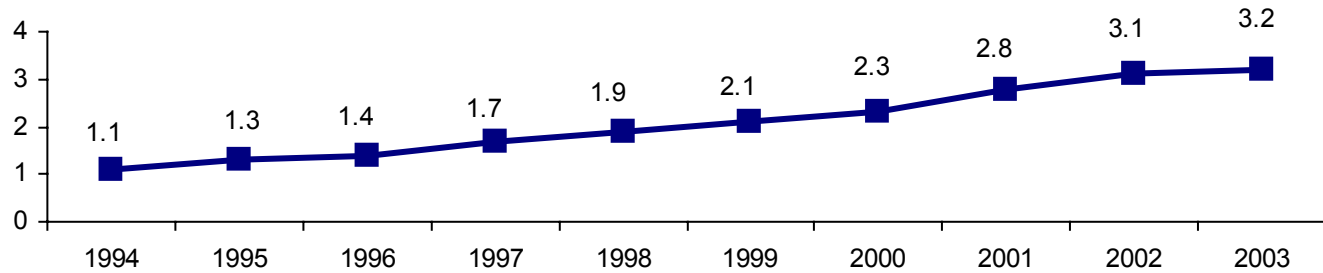


| | 2002 | 2003 |
|--|---------------|--------------------------------|
| Pistons and Engine Components Without newly consolidated companies MAHLE Izumi, MAHLE Izumi Hirata Seiki, Yamagata Izumi | 16,545 | 17,701 16,739 |
| Filter Systems Without newly consolidated companyTennex Korea | 6,135 | 6,241 6,213 |
| Valve Train Systems Without newly consolidated companies ZNF Maschinenfabrik Spandau, MAHLE Ventiltrieb Brandenburg | 5,965 | 6,267 6,009 |
| Services | 477 | 437 |
| MAHLE Group Without newly consolidated companies | 29,122 | 30,646 29,398 |

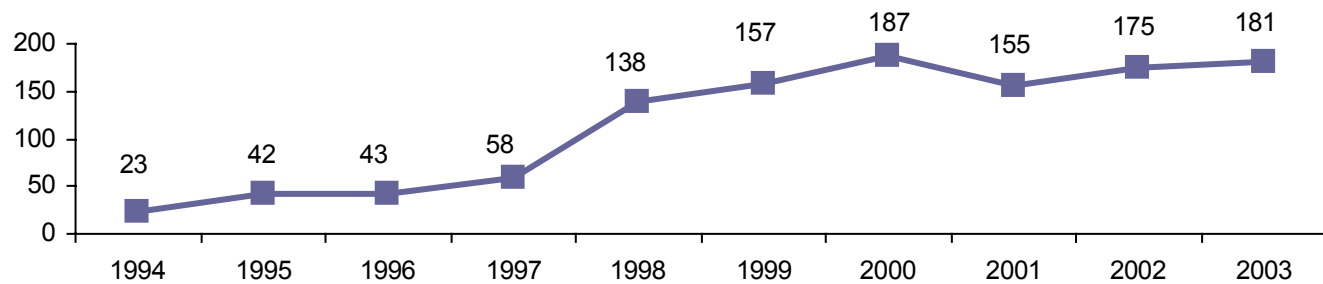
Trends at MAHLE



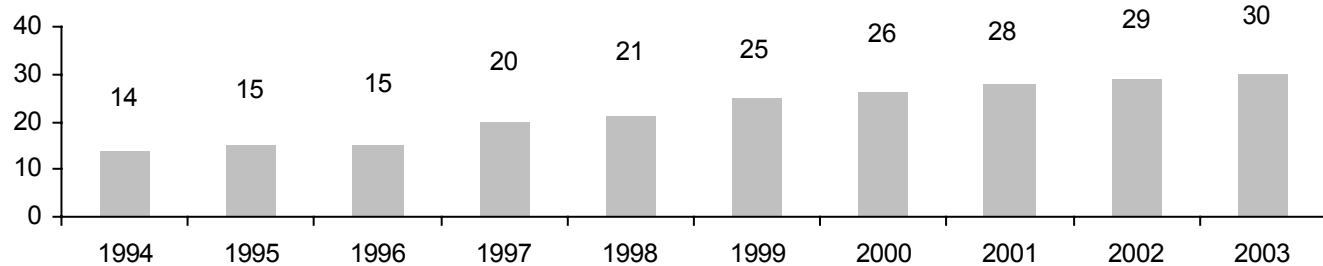
Sales in Bill. Euro



Result from ordinary activity in Bill. Euro



Headcount in 1000s



Worldwide Automobile Production 2003/2004

(Number in 1000s)



| | 2003 | | 2004 | |
|------------------------|---------------------------|---------------------|---------------------------|---------------------|
| | Pass. cars & light comls. | Commercial vehicles | Pass. cars & light comls. | Commercial vehicles |
| America | 17,827 | 426 | 18,517 | 547 |
| - NAFTA | 15,937 | 357 | 16,357 | 445 |
| - South America | 1,890 | 69 | 2,160 | 75 |
| Asia/Pacific | 19,511 | 728 | 20,246 | 698 |
| - Japan | 9,877 | 196 | 9,499 | 190 |
| - China | 3,629 | 397 | 4,200 | 334 |
| Europe | 19,427 | 449 | 20,004 | 468 |
| - Germany | 5,299 | 125 | 5,446 | 130 |
| Other Countries | 1,023 | 0 | 1,076 | 0 |

Source: Global Insight Automotive World Car Industry Report (Pass. cars and light comls. (< 6t))

**Thank you
for your attention**

MAHLE International GmbH
Birgit Albrecht
Corporate Communications/Public Relations
Pragstraße 26 - 46
D-70376 Stuttgart

Phone: +49 (0) 7 11/5 01-25 06
Fax.: +49 (0) 7 11/5 01-37 00
E-Mail: birgit.albrecht@mahle.com