

### Filter media

### Ti 18

Polyphenyl sulphide with PTFE membrane

#### 1. Features

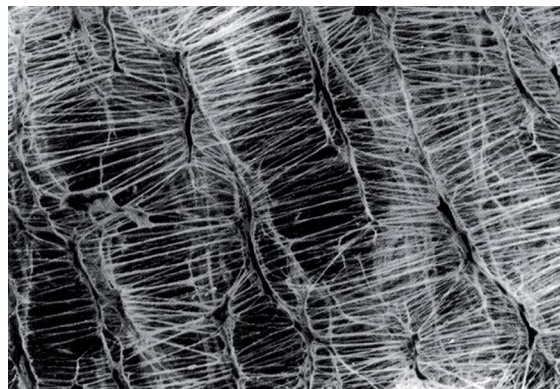
The two-layer structure of this filter media enables the maximum benefit of the surface filtration.

The fine-pored PTFE membrane separates almost all the dust on the membrane surface.

Especially challenging filtration tasks will be solved with a long service life. Polyphenyl sulphide with a PTFE membrane combines very good filtration efficiency with good cleanability. It also boasts good chemical and temperature resistance as well as excellent resistance to hydrolysis.

#### Characteristics

- Efficient surface filtration thanks to microporous PTFE membrane
- High mechanical strength
- Very good chemical resistance to acids, alkalis and organic solvent vapours
- Very smooth, fibre-free surface
- Excellent resistance to hydrolysis
- Good cleanability
- Compliance with the requirements of DIN EN 60335-2-69 and EN 1822-3 class H10 at  $v = 1\text{m/min}$
- FDA approval acc. to 21 CFR Ch. I § 177.1550
- Worldwide distribution

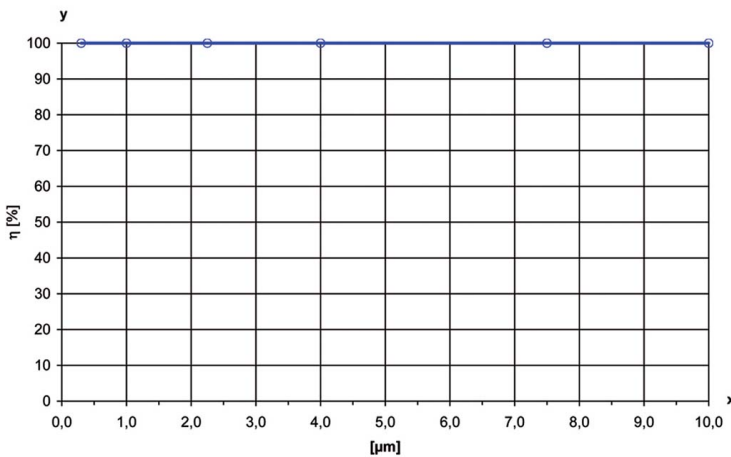


## 2. Technical data

Type	Media	Media thickness [mm]	Weight [g/m <sup>2</sup> ]	Air permeability [m <sup>3</sup> /m <sup>2</sup> h]	max. operating temperature [°C]	Test certificates/ dust classes
Ti 18	Polyphenyl sulphide (PPS) with polytetrafluoroethylene (PTFE) membrane	0.7	250	200 at Δp 200 Pa	160 (permanent) 190 *	DIN EN 60335-2-69 "M"

\* With reduced oxygen content. Technical data is subject to change without notice!

## 3. Filtration efficiency



Filtration efficiency: > 99.99 %  
at 0.3 μm

Test conditions  
Inflow velocity: 3.36 m/h  
Mass concentration: 200 mg/m<sup>3</sup>  
Test dust: Dolomit DRB 20 (Rock flour)

x = Particle size [μm]  
y = Filtration efficiency η [%]

These values may vary depending on the nature of the dust, the composition of the gas and the cartridge design.

## 4. Chemical resistance/mechanical properties

Chemical resistance	Chemical resistance			Mechanical properties	Mechanical properties		
	Very good	Good	Limited		Very good	Good	Limited
Water	x			Surface quality (smoothness)	x		
Hydrolysis	x			Stability	x		
Acids		x		Abrasion resistance			x
Alkalis		x		Cleanability (jet pulse)	x		
Solvents		x		Washability		x	

These properties are of a purely qualitative valuation and depending on the nature of the dust, the composition of the gas and the operating conditions.

## 5. Design

Please contact us for detailed technical information, any open questions and for general expert advice. Completion of the relevant questionnaire would facilitate in the coordination of all the important parameters.

Comprehensive documentation on our product range, cleaning units and cartridges can be provided.

MAHLE Industriefiltration GmbH  
Schleifbachweg 45  
D-74613 Öhringen  
Phone +49 7941 67-0  
Fax +49 7941 67-23429  
industriefiltration@mahle.com  
www.mahle-industriefiltration.com  
70342007.09/2011